



"Apparel and promotional products experts!"

# EVENTS & TRADE SHOWS: YOUR ULTIMATE GUIDE TO BRANDED APPAREL & SWAG



# CAPTIVATING YOUR AUDIENCE

---

Trade shows are a **big deal**. They're a chance to expand your network, make valuable connections, and find potential partners and collaborators.

**Plus, you get to hear from industry experts, stay in the loop, and show off your skills.**

At Kevins Worldwide<sup>®</sup>, we recognize the significance of networking, branding, and making a lasting impression in a vibrant environment. Whether you're an experienced exhibitor seeking to refresh your trade show approach or a newcomer ready to leave a mark, Kevins Worldwide is ready to help you in boosting your presence.



# Exhibitor Essentials: Booth Set Up | Q



#332254

## 8' CURVED ARISE FLOOR DISPLAY KIT (FULL MURAL)

- Kit Includes: 1 Frame, 18 Magnet Bars, 3 Center Mural Panels, 2 End Mural Panels, 2 Lights, 1 Oval Hard Case, 1 Hard Case Mural Wrap & 1 Counter Top 100" W x 89.5" H x 26.25" D

EASY TO TRAVEL WITH,  
AND A GREAT CHOICE  
FOR MAKING THE BEST  
OF SMALL SPACES!



#109001

## 6' FITTED TABLE THROW (FULL-COLOR FULL BLEED)



#263410

## ESSENTIAL BANNER DISPLAY KIT



#259002

## 4' X 6' FLOOR HUGGER MAT



#241271

## 10' OMNI TENT KIT (FULL-COLOR IMPRINT, 1 LOCATION)



#280104

## SPIN 'N WIN PRIZE WHEEL KIT



#YOURTEAM

## A GREAT TEAM (PROBABLY THE MOST IMPORTANT!)



## PORT AUTHORITY FAIRWAY STRETCH 1/4-ZIP

#K829 / #LK829

Designed for the fairway or the corporate hallway, this cotton-rich 1/4-zip adds a lightweight layer of warmth with enough stretch for easy movement.

- 6.1-ounce, 70/26/4 cotton/poly/spandex jersey
- Cadet collar
- Covered zipper placket
- Self-fabric cuffs
- Open hem
- Tag-free label



## PORT AUTHORITY FINE PIQUE BLEND POLO

#K830 / #LK830

With its fine cotton-rich blend, this moisture-wicking performance polo is as at home on the course as it is in the office.

- 4.3-ounce, 57/43 cotton/poly pique
- Moisture-wicking
- Self-fabric collar with collar stand
- Slight forward shoulder
- 5-button placket
- Notched sleeve cuffs
- Rounded drop tail hem
- Tag-free label



## DISTRICT® PERFECT WEIGHT® TEE

#DT104 / #DT104L

An effortless, perfect tee for everyday wear.

- 4.3-ounce, 100% combed ring spun cotton, 32 singles Tear-away label
- 1x1 rib knit neck
- Shoulder to shoulder taping

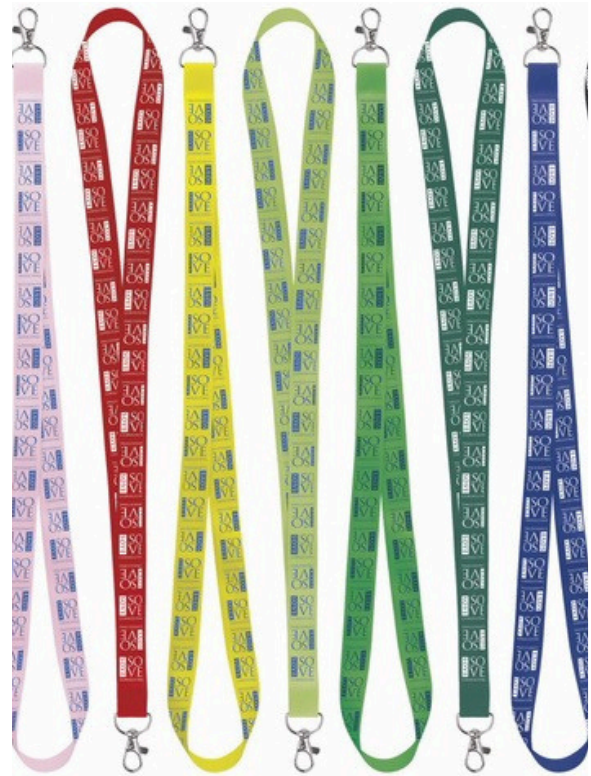


THE PERFECT ACCESSORIES!



#308

**NYLON NECK WALLET  
BADGE HOLDER**



#32208

**3/4" SATIN SCREEN  
PRINT LANYARD**

# CAPTIVATING YOUR AUDIENCE

---

**Amidst the frenzy of a crowded convention or event, one strategic tool stands out for its effectiveness in leaving an impression: branded apparel & promo items.**

In a sea of booths and exhibits, everyone is asking for attention - and promo is your secret weapon. Think of it as a walking advertisement. It will be with your prospect in (and out) of the show, which increases your brand visibility, and keeps your company top of mind. It's all about leaving a positive impression that sticks around after the trade show is over.



# Promo & Giveaways: The Basics



#11988

**JAVALINA®  
CORPORATE PEN**



#56223

**FULL COLOR  
MALIBU SUNGLASSES**



#WOF-OW19

**ORACLE WEB CAM  
COVER**



#3840

**COOPER COTTON  
DRAWSTRING BAG**



#56223

**SMALL SNAP NOTEBOOK  
WITH DESK ESSENTIALS**



#1350

**PANTONE MATCHED  
JACQUARD DRESS SOCKS**



#36

**KAN-TASTIC WITH  
BOTTLE OPENER**



#WPC-MC23

**6"X6" MICROFIBER CLEANING  
CLOTH IN CLEAR PVC CASE**



#80003

**PUSH POP SQUARE  
STRESS RELIEVER GAME**

# Promo & Giveaways: Memorable Basics



#BAG500

EVERYWHERE BELT BAG /  
FANNY PACK



#DBT-AS23

ASBURY 24 OZ RECYCLED  
ALUMINUM BOTTLE



#2625UL

UL LISTED 2200 MAH ON-  
THE-GO POWER BANK



#26066

POPSOCKETS  
POPGRIP



#PL-4685

RUBIK'S® 9-PANEL FULL  
STOCK CUBE

# Promo & Giveaways: Prizes & Incentives



#1603-01

40 OZ STANLEY QUENCHER  
H2.O FLOWSTATE™  
TUMBLER



#7196-06

SKULLCANDY  
CASSETTE  
BLUETOOTH HEADPHONES



#2800-58

5.5" X 8.5" FSC® MIX  
WALTON WIRELESS  
CHARGING JOURNALBOOK®



#1450-95

5PC BBQ SET



#CPN-555415037

RTIC OUTDOORS 3 GALLON  
HALFTIME WATER COOLER



#1450-95

CHAMPION® REVERSE WEAVE  
® HOODED SWEATSHIRT

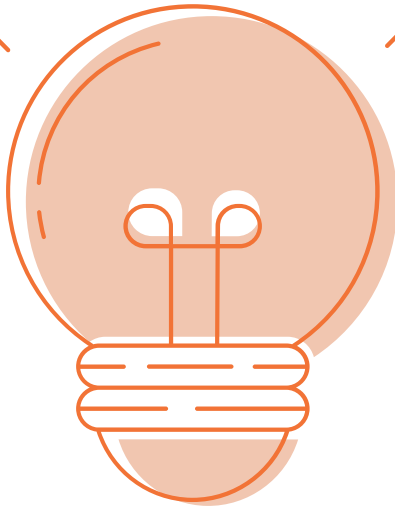
# TRADE SHOW TIPS

## 01 — PLAN AHEAD

Research your event, establish your goals, and develop a comprehensive plan to optimize your time and resources.

## 02 — CREATE AN ENGAGING BOOTH DESIGN

Craft an attractive booth by integrating captivating displays, signage, and interactive features to draw in visitors.



SHOT SHOW, 2026

# TRADE SHOW TIPS

## 03 — STAFF TRAINING

Make sure your team is well-informed, friendly, and ready to interact with participants to convey your brand message clearly.

## 04 — GIVEAWAYS WITH PURPOSE

Provide branded giveaways that are practical, memorable, and tailored to your target audience to boost retention and brand recognition.

## 05 — INTERACTIVE EXPERIENCES

Include interactive activities, demonstrations, or games to captivate attention and craft unforgettable experiences for participants.

## 06 — STRATEGIC NETWORKING

Explore networking possibilities by joining seminars, workshops, and social gatherings at the trade show to connect with industry experts and potential partners.

## 07 — POST-EVENT FOLLOW-UP

Send personalized follow-up emails or messages to nurture relationships and convert leads into customers after the trade show.



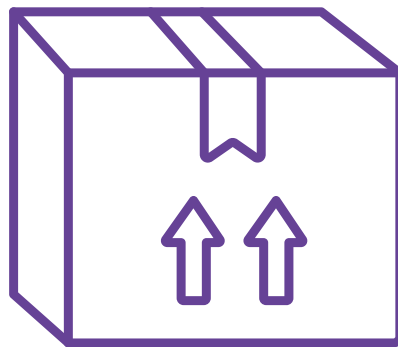
**Remember, trade shows are valuable opportunities to showcase your brand, build relationships, and generate growth opportunities. It's a time to give it all you've got - and we know you can!**



# MORE THAN A VENDOR. A PARTNER.



**Dedicated  
Team of  
Experts**



**FREE  
Warehousing  
& Fulfillment**



**In-house  
Screenprint &  
Embroidery**



**90-minute  
Response  
Time**



**Custom  
Company Swag  
Stores**

**& so much more!**

# Your Brand's Success. Our Priority.

Connect with our team today!





"Apparel and promotional products experts!"

